

Simply Positive



simply positive



Our Goals

Simply Positive supports cities and municipalities on their way to Positive Energy Districts:

- ✓ Produce more energy locally than consume it
- ✓ Implement sensible cost-cutting measures
- ✓ Minimize CO₂ emissions and relieve the climate

Development of innovative strategies, concepts, and guidelines to increase the participation level of municipalities and cities to foster the creation of Positive Energy Districts through:

- ➔ Focus on and expansion of existing urban strategies for climate and environmental strategies
- ➔ Creation of a standardized and practicable energy balance calculation process based on available data
- ➔ Monitoring system to see, qualify and verify actions
- ➔ Evaluation of participation strategies based on impact and acceptance

www.simplypositive.eu

KPI's for PED/PEN assessments

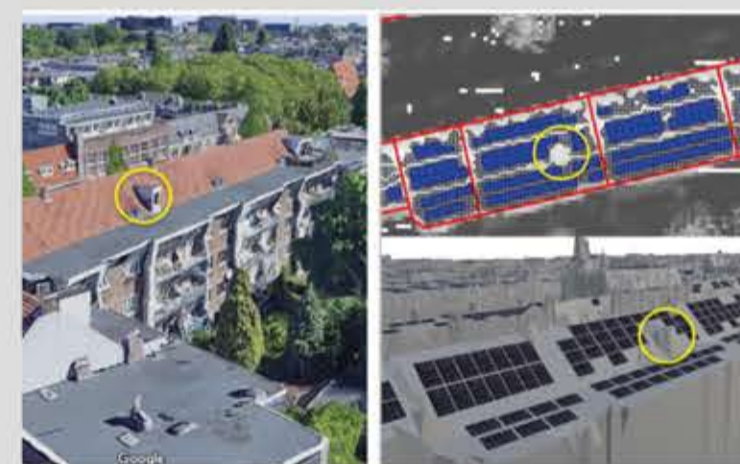
#	Name	Measuring Unit	Type
Overall Indicator			
1	PED / PEN achievement rate	%	External
Energy related			
2	Final energy consumption	kWh/a	External
3	Primary energy consumption	kWh/a	External
4	RES generation	kWh/a	External
5	Degree of energetic self-supply by RES	%	External
Environment related			
6	Greenhouse gas emissions	kgCO ₂ eq/a	External
User & Stakeholder acceptance			
7	People reached	%	Internal
8	Success rate	%	Internal
Others (economic)			
9	Money spent	€	Internal
10	Return on investment	years	Internal

Selected:
7 profiling indicators
10 primary indicators
15 secondary indicators

Deliverable:



Visualisation of PV installation progress

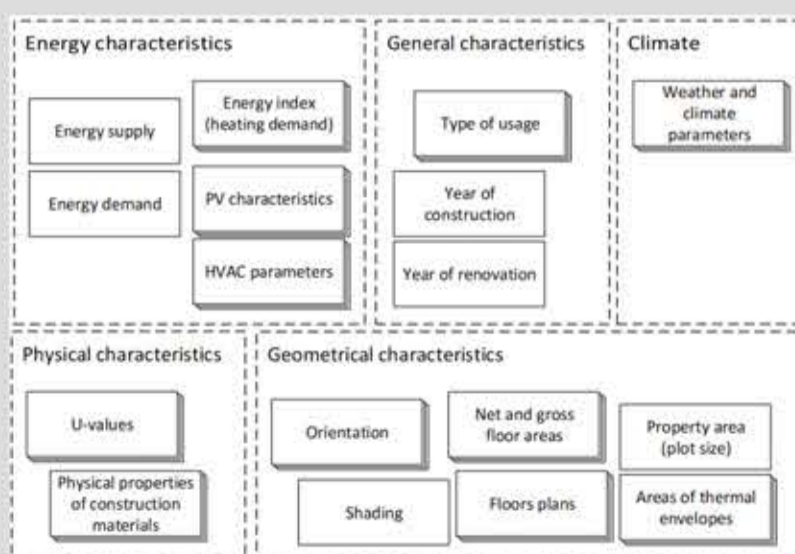


Example Amsterdam:
PV potential and usage with skyline-based calculation models

Deliverable:



Examples of first results

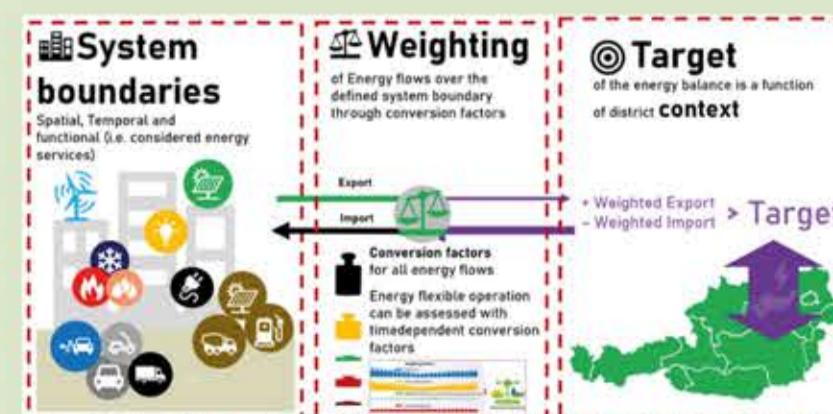


Data Gathering:
Required energy data for PED calculation versus available data of Focus Districts

Deliverable:



Energy Balance Calculation Data and Gaps



PED operationalization:
Definition goals for PEDs, boundaries, and energy balance calculation

Deliverable:



Framework definition on PED/PENs